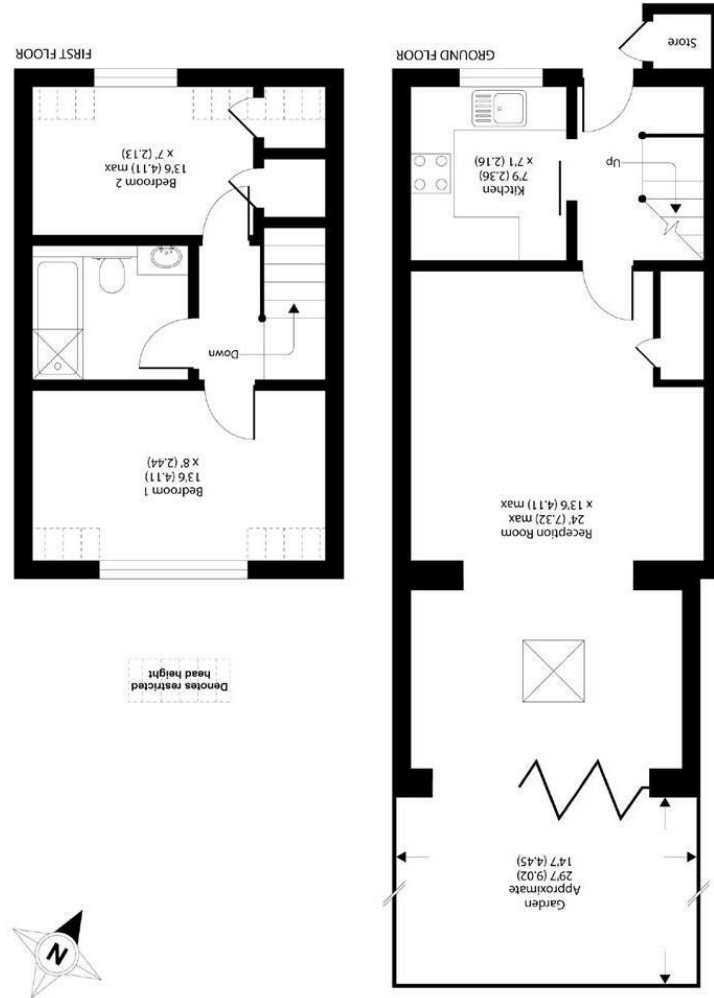
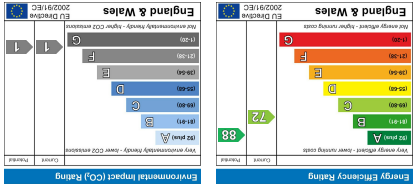


Important Information
 All appliances listed in these details are only 'as seen' and have not been tested by Gibson Lane, nor have we sought certification of warranty or service, unless otherwise stated. Measurements, areas and distances are approximate. Floor plans and photographs are for guidance purposes only and must not be relied upon for any purpose. These details are offered on the understanding that all negotiations are made through this company. Neither these particulars, nor verbal representations, form part of any offer or contract, and their accuracy cannot be guaranteed.



APPROX. GROSS INTERNAL FLOOR AREA 690 SQ FT 64.1 SQ METRES
 (EXCLUDES RESTRICTED HEAD HEIGHT & STORE)

34 Richmond Road
 Kingston upon Thames
 Surrey
 KT2 5ED
 www.gibsonlane.co.uk
 Tel: 020 8546 5444



Archer Close

Kingston Upon Thames KT2 5NE



Archer Close

Kingston Upon Thames KT2 5NE

Guide Price £575,000

A modern freehold house presented to a high standard internally and sold with the benefits of a southerly aspect garden and parking.

Description

A modern freehold two bedroom house recently extended to provide a stunning 24' reception room with bi-fold doors leading directly onto a landscaped southerly aspect rear garden. Other features include recently fitted carpets and engineered oak flooring, modern white bathroom suite and parking at the front for 2/3 cars. NB we understand from the seller that this is a private close maintained through a management company with an annual fee of approximately £270 per property.

Situation

Archer Close is Moments from Canbury Gardens and the River Thames. The property is ideally situated for Kingston station giving direct access into Waterloo and the A3 which serves both London & M25. Kingston town centre with its array of shops, restaurants & bars is a short distance away. The standard of schooling in the immediate area is excellent within both the private & state sectors, these include Latchmere, Fern Hill, The Kingston Academy, The German School and Tiffin boys & girls, the area also has an extensive range of leisure facilities.

Tenure: Freehold

Local Authority: Kingston Upon Thames

